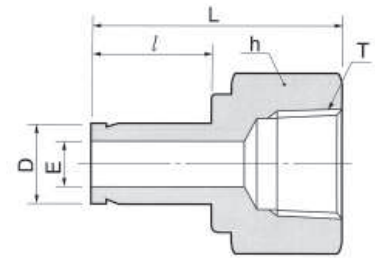


Adaptor z gwintem wewnętrznym NPT

Wartości ciśnień dla złączki DAF-N znajdują się w tabeli nr 21 na stronie 13



Połączenie stalowego portu Dk-Lok z zewnętrznym gwintem NPT DAF-N-...

Kod	Średnica zewn. rury		T NPT	E min	Odległość pow. płaskich		l	L
	in	mm			h	mm		
DAF 2-2N	1/8	3.17	1/8	1.77	9/16	14.28	13.45	31.50
DAF 2-4N	1/8	3.17	1/4	1.77	3/4	19.05	13.45	35.30
DAF 3-2N	3/16	4.76	1/8	3.04	9/16	14.28	14.20	32.00
DAF 3-4N	3/16	4.76	1/4	3.04	3/4	19.05	14.20	35.81
DAF 4-2N	1/4	6.35	1/8	4.57	9/16	14.28	15.75	33.02
DAF 4-4N	1/4	6.35	1/4	4.57	3/4	19.05	15.75	37.10
DAF 4-6N	1/4	6.35	3/8	4.57	7/8	22.22	15.75	39.37
DAF 4-8N	1/4	6.35	1/2	4.57	1-1/16	26.98	15.75	45.50
DAF 5-2N	5/16	7.93	1/8	6.35	9/16	14.28	16.80	34.29
DAF 5-4N	5/16	7.93	1/4	6.35	3/4	19.05	16.80	37.59
DAF 6-2N	3/8	9.52	1/8	7.11	9/16	14.28	17.50	34.29
DAF 6-4N	3/8	9.52	1/4	7.11	3/4	19.05	17.50	38.10
DAF 6-6N	3/8	9.52	3/8	7.11	7/8	22.22	17.50	40.38
DAF 6-8N	3/8	9.52	1/2	7.11	1-1/16	26.98	17.50	46.73
DAF 8-4N	1/2	12.70	1/4	9.90	3/4	19.05	23.20	43.43
DAF 8-6N	1/2	12.70	3/8	9.90	7/8	22.22	23.20	45.46
DAF 8-8N	1/2	12.70	1/2	9.90	1-1/16	26.98	23.20	51.80
DAF 10-6N	5/8	15.87	3/8	12.70	7/8	22.22	24.70	48.26
DAF 10-8N	5/8	15.87	1/2	12.70	1-1/16	26.98	24.70	53.84
DAF 10-12N	5/8	15.87	3/4	12.70	1-5/16	33.33	24.70	55.37
DAF 12-8N	3/4	19.05	1/2	14.98	1-1/16	26.98	24.70	52.83
DAF 12-12N	3/4	19.05	3/4	14.98	1-5/16	33.33	24.70	54.86
DAF 12-16N	3/4	19.05	1	14.98	1-5/8	41.27	24.70	58.42
DAF 14-12N	7/8	22.22	3/4	17.27	1-5/16	33.33	26.70	57.15
DAF 16-12N	1	25.40	3/4	20.06	1-5/16	33.33	31.70	60.70
DAF 16-16N	1	25.40	1	20.06	1-5/8	41.27	31.70	64.26
DAF 20-20N	1-1/4	31.75	1-1/4	27.68	2-1/8	53.98	40.00	77.72
DAF 24-24N	1-1/2	38.10	1-1/2	33.27	2-3/8	60.33	51.50	88.90
DAF 32-32N	2	50.80	2	44.45	2-7/8	73.03	68.40	107.44

Połączenie metrycznego portu Dk-Lok z zewnętrznym gwintem NPT DAF-N-...M

Kod	Śr. zewn. rury	T NPT	E min	Odl. pow. płaskich h	l	L
	D					
DAF 6M-2N	6	1/8	4.6	14	15.70	32.50
DAF 6M-4N	6	1/4	4.6	19	15.70	37.10
DAF 8M-4N	8	1/4	6.3	19	16.80	37.60
DAF 10M-4N	10	1/4	7.7	19	17.50	38.10
DAF 10M-6N	10	3/8	7.7	22	17.50	40.10
DAF 10M-8N	10	1/2	7.7	27	17.50	46.50
DAF 12M-4N	12	1/4	9.1	19	23.10	43.70
DAF 12M-6N	12	3/8	9.1	22	23.10	46.00
DAF 12M-8N	12	1/2	9.1	27	23.10	52.30