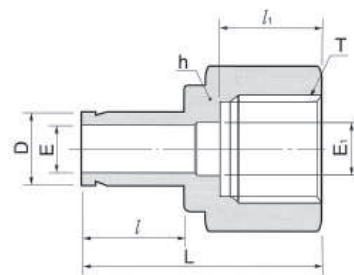


Adaptor z gwintem wewnętrznym manometrycznym



Połączenie calowego portu Dk-Lok z manometrem (o zewnętrznym gwincie równoległym ISO)

NPT DAF-GG-...

Kod	Średnica zewn. rury		T G(PF)	E min	E ₁	Odległość pow. płaskich		l	l ₁	L
	in	mm				in	mm			
DAF 4-2GG	1/4	6.35	1/8	4.57	4.57	9/16	14.28	15.75	12.0	32.00
DAF 4-4GG	1/4	6.35	1/4	4.57	5.5	3/4	19.05	15.75	12.9	35.30
DAF 6-6GG	3/8	9.52	3/8	6.60	6.5	15/16	23.81	17.50	14.1	39.37
DAF 8-8GG	1/2	12.7	1/2	7.11	7.0	1-1/16	26.98	23.20	18.9	45.72

Połączenie metrycznego portu Dk-Lok z manometrem (o zewnętrznym gwincie równoległym ISO)

PT DAF-GG-...M

Kod	Śr. zewn. rury	T G(PF)	E min	E ₁	Odl. pow. płaskich h	l	l ₁	L
	D							
DAF 6M-2GG	6M	1/8	4.0	4.0	14	15.7	12.0	32.0
DAF 6M-4GG	6M	1/4	4.0	5.5	19	15.7	13.0	35.3
DAF 6M-6GG	6M	3/8	4.0	6.5	24	15.7	14.22	38.4
DAF 6M-8GG	6M	1/2	4.0	7.0	27	15.7	18.9	42.9
DAF 8M-4GG	8M	1/4	5.6	5.5	19	16.8	13.0	33.0
DAF 8M-6GG	8M	3/8	5.6	6.5	24	16.8	14.22	39.3
DAF 8M-8GG	8M	1/2	5.6	7.0	27	16.8	18.9	43.7
DAF 10M-4GG	10M	1/4	7.7	5.5	19	17.5	13.0	34.5
DAF 10M-6GG	10M	3/8	7.7	6.5	24	17.5	14.22	39.3
DAF 10M-8GG	10M	1/2	7.7	7.0	27	17.5	18.9	40.1
DAF 12M-4GG	12M	1/4	9.1	5.5	19	23.1	13.0	40.1
DAF 12M-6GG	12M	3/8	9.1	6.5	24	23.1	14.22	44.9
DAF 12M-8GG	12M	1/2	9.1	7.0	27	23.1	18.9	48.8
DAF 15M-8GG	15M	1/2	12.0	7.0	27	24.65	18.9	49.0
DAF 16M-8GG	16M	1/2	12.0	7.0	27	24.6	18.9	49.0
DAF 18M-8GG	18M	1/2	13.9	7.0	27	24.9	18.9	49.3
DAF 22M-8GG	22M	1/2	18.3	7.0	27	26.6	18.9	52.0
DAF 25M-8GG	25M	1/2	19.8	7.0	30	31.7	18.9	56.1