

Monoflange

- ASME B16.5 flanged inlet connections 1/2" to 2" sizes.
- Standard 1/2" NPT female outlet.
- Bleed port 1/2" NPT female with Hex Plug is standard.
- OS&Y with graphite packing is standard, optional PTFE.
- Needle valve with PTFE packing is standard, optional Graphite.
- Optional fire safe design to BS6755 part 2.
- Optional NACE certification.



Ordering Information

VMS Series (Single Block)

Flange to 1/2" NPTF
Isolate : OS&Y or Needle

Designators	Isolate	Intermediate Ordering #
Y	OS&Y	VMS-Y
N	Globe Needle	VMS-N

VMB Series (Single Block & Bleed)

Flange to 1/2" NPTF
Isolate : OS&Y or Needle
Bleed : OS&Y or Needle

Designators	Isolate	Bleed	Intermediate Ordering #
Y	OS&Y	OS&Y	VMB-Y
N	Globe Needle	Globe Needle	VMB-N
D	OS&Y	Globe Needle	VMB-D

VMD Series (Double Block & Bleed)

Flange to 1/2" NPTF
Primary Isolate : OS&Y or Needle
Secondary Isolate : OS&Y or Needle
Bleed : OS&Y or Needle

Designators	Primary Isolate	Secondary Isolate	Bleed	Intermediate Ordering #
Y	OS&Y	OS&Y	OS&Y	VMD-Y
N	Globe Needle	Globe Needle	Globe Needle	VMD-N
D	OS&Y	OS&Y	Globe Needle	VMD-D

Process Connections

Flange Size		Flange Class		Finish Standard	
Designator	Size	Designator	Class Rating	Designator	Finish
8	1/2" (DN15)	A	150	1	Raised Faced Smooth
12	3/4" (DN20)	B	300	2	Raised Faced Serrated
16	1" (DN25)	C	600	3	Raised Faced Stock
24	1 1/2" (DN40)	D	900/1500		
32	2" (DN50)	E	2500		
48	3" (DN80)	48	3" (DN80)		

Packing Material

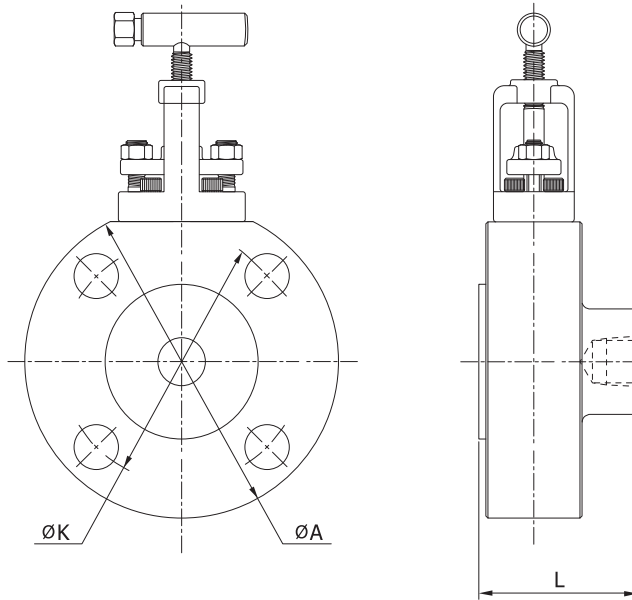
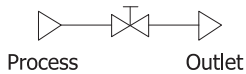
OS&Y Packing	Needle Valve Packing
Nil : Standard Graphite PE : PTFE	Nil : Standard PTFE GF : Graphite RP : Reinforced PTFE

Option, Trim and Body Material

Option	Trim Material	Body Material
SG : NACE MR0175 FS : Fire tested design	S : SS316 C : Carbon Steel D : Duplex M : Monel	S : SS316 C : Carbon Steel D : Duplex M : Monel

Product Range / Weights and Dimensions

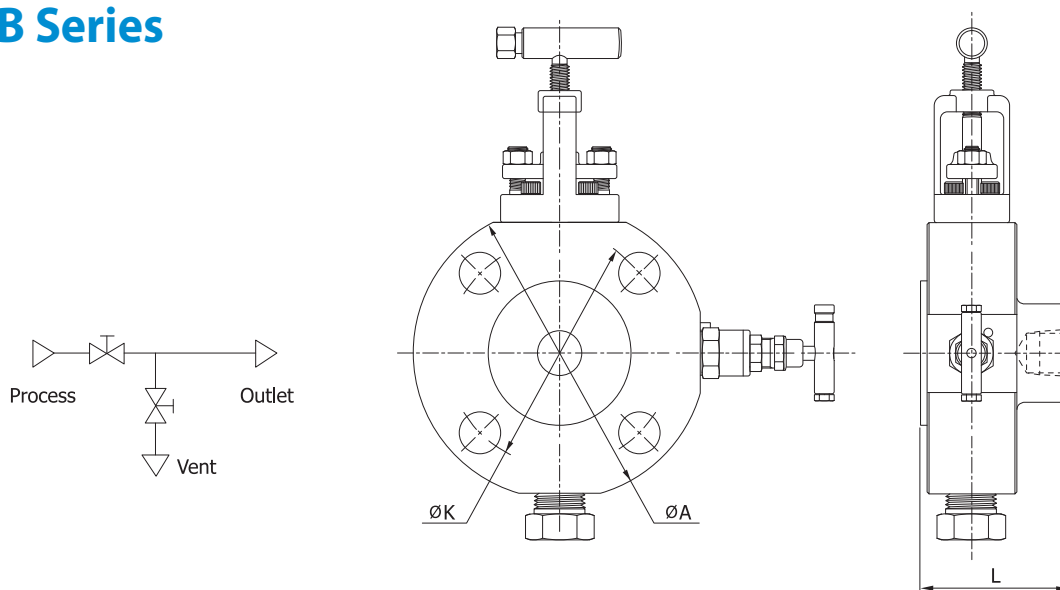
Single Block

VMS Series


Size (inch)	Class	Dimensions(mm)				Weight (kg)
		L(RF)	L(RTJ)	A	K	
1/2	150	64	-	99	60.3	2.0
	300	64	68	99	66.7	2.0
	600	68	68	99	66.7	2.0
	900/1500	68	68	133	82.5	3.4
	2500	68	68	133	88.9	3.4
3/4	150	64	-	99	69.8	2.0
	300	64	68	133	82.5	3.4
	600	68	68	133	82.5	3.4
	900/1500	68	68	133	88.9	3.4
	2500	73	73	159	95.2	5.5
1	150	64	68	133	79.4	2.4
	300	64	68	133	88.9	3.4
	600	68	68	133	88.9	3.4
	900/1500	73	73	159	101.6	5.5
	2500	73	73	159	108.0	5.5
1 1/2	150	64	68	127	98.4	3.2
	300	69	69	159	114.3	5.5
	600	73	73	159	114.3	5.5
	900/1500	73	73	178	128.8	7.8
	2500	82	84	235	146.1	11.4
2	150	69	73	159	120.6	5.5
	300	69	75	178	127.0	7.8
	600	73	75	178	127.0	7.8
	900/1500	82	84	235	165.1	11.4

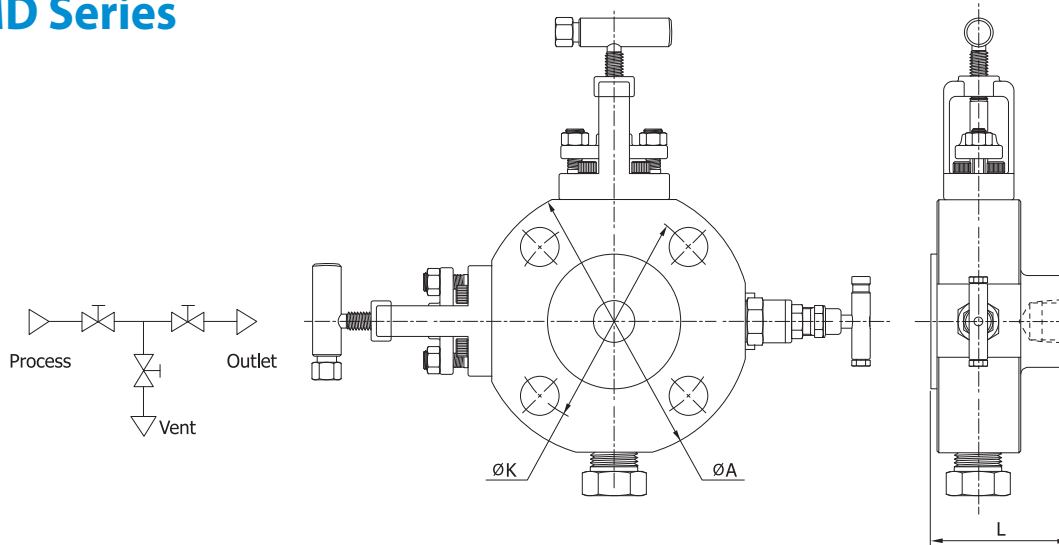
Single Block & Bleed

VMB Series



Size (inch)	Class	Dimensions(mm)				Weight (kg)
		L(RF)	L(RTJ)	A	K	
1/2	150	64	-	99	60.3	2.0
	300	64	68	99	66.7	2.0
	600	68	68	99	66.7	2.0
	900/1500	68	68	133	82.5	3.4
	2500	68	68	133	88.9	3.4
3/4	150	64	-	99	69.8	2.0
	300	64	68	133	82.5	3.4
	600	68	68	133	82.5	3.4
	900/1500	68	68	133	88.9	3.4
	2500	73	73	159	95.2	5.5
1	150	64	68	133	79.4	2.4
	300	64	68	133	88.9	3.4
	600	68	68	133	88.9	3.4
	900/1500	73	73	159	101.6	5.5
	2500	73	73	159	108.0	5.5
1 1/2	150	64	68	127	98.4	3.2
	300	69	69	159	114.3	5.5
	600	73	73	159	114.3	5.5
	900/1500	73	73	178	128.8	7.8
	2500	82	84	235	146.1	11.4
2	150	69	73	159	120.6	5.5
	300	69	75	178	127.0	7.8
	600	73	75	178	127.0	7.8
	900/1500	82	84	235	165.1	11.4

Double Block & Bleed
VMD Series



Size (inch)	Class	Dimensions(mm)				Weight (kg)
		L(RF)	L(RTJ)	A	K	
1/2	150	64	-	99	60.3	2.0
	300	64	68	99	66.7	2.0
	600	68	68	99	66.7	2.0
	900/1500	68	68	133	82.5	3.4
	2500	68	68	133	88.9	3.4
3/4	150	64	-	99	69.8	2.0
	300	64	68	133	82.5	3.4
	600	68	68	133	82.5	3.4
	900/1500	68	68	133	88.9	3.4
	2500	73	73	159	95.2	5.5
1	150	64	68	133	79.4	2.4
	300	64	68	133	88.9	3.4
	600	68	68	133	88.9	3.4
	900/1500	73	73	159	101.6	5.5
	2500	73	73	159	108.0	5.5
1 1/2	150	64	68	127	98.4	3.2
	300	69	69	159	114.3	5.5
	600	73	73	159	114.3	5.5
	900/1500	73	73	178	128.8	7.8
	2500	82	84	235	146.1	11.4
2	150	69	73	159	120.6	5.5
	300	69	75	178	127.0	7.8
	600	73	75	178	127.0	7.8
	900/1500	82	84	235	165.1	11.4

Caution

Valves that have not been actuated for a period of time may have a higher initial actuation torque. Packing adjustment may be required during the valve in service.