



ISO A - ISO B - Standard
 ISO A - ISO B - Standard
 ISO A - ISO B - Standard
 ISO A - ISO B - Standard

Agriculture
 Agricoltura
 Landwirtschaft
 Agriculture

Screw Together
 Innesti a vite
 Schraubkupplungen
 A Visser

Check Valves
 Valvole Unidirezionali
 Rückschläventile
 Clapet Anti-retour

Diagnostic
 Diagnostici
 Diagnostik
 Diagnostik

Flat Face
 Innesti Faccia Piana
 Flachdichtend
 Clapet à Face Plat

Multifaster
 Multicommissioni
 Multifunktionen
 Multifaster

Features



Connexion by screwing together the two parts.

Disconnexion by pulling back the female safety sleeve and unscrew.

Shut off by flat valve

Connectable with male part under residual pressure (35MPa-5075PSI) without using tools

Disconnexion under pressure allowed

Interchangeability according to Faster internal Standards

No spillage during Connexion and Disconnexion

Female part equipped with axial rotation adapters.

Mating threads heat treated and made to Rd profile.

High volume flow and reduced pressure drop is ensured by specially designed components.

Caratteristiche



Connessione avvitando maschio e femmina.

Disconnessione mediante arretramento ghiera di sicurezza della parte femmina e svitare.

Sistema di tenuta mediante valvole a faccia piana

Maschi innestabili con pressione residua (35MPa-5075PSI), senza l'ausilio di chiavi / utensili.

Disconnessione in pressione consentita

Intercambiabilità secondo Norma interna Faster

Assenza di spillaggio durante connessione e disconnessione

Parte femmina equipaggiata con adattatori liberi in rotazione assiale.

Filetti di connessione a profilo Rd trattati termicamente

Elevata portata grazie ai profili interni speciali per ridurre perdite di carico.

Merkmale



Verbindung durch Verschrauben der beiden Teile

Entkuppeln durch zurückschieben der Sicherheitsschiebehülse

Schließen durch flache Ventile

Unter Restdruck kuppelbar (35MPa-5075PSI) ohne Verwendung von Werkzeugen

Entkuppeln unter Druck erlaubt

Austauschbarkeit Faster internen Standard

Kein Leckage während des Kuppel und Entkuppelvorgangs

Muffe mit axialem Drehapter ausgestattet

Verbindungsgewinde als Rundgewinde

Hoher Durchfluß, gewährleistet bei niedrigem Druckverluste durch Spezialtechnik

Caractéristiques



Connexion en dévissant les deux parties

Déconnexion en tirant la bague de sécurité femelle et dévisser

Clapet à Face Plate

Connexion possible avec une pression résiduelle dans la partie Mâle (35MPa-5075PSI), sans utiliser d'outils

Déconnexion sous pression possible

Interchangeabilité conformément à la norme interne Faster

Pas fuite lors de la connexion et la déconnexion

La partie femelle possède des adapteurs libres en rotation axiale

Filetage de connexion avec un profilé RD traité thermiquement

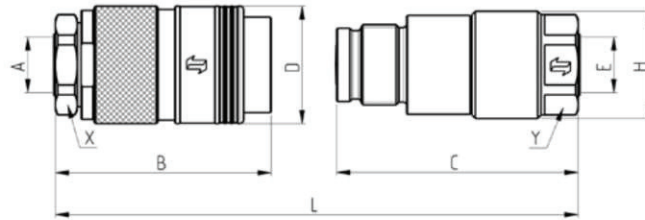
Haut débit grâce aux profils internes spécifiques qui réduisent les pertes de charge

Fields of application
Settori di applicazione
Anwendungsbereiche
Domaines d'application



Size Base BG Taille		Max Working pressure Max pressione di esercizio Betriebsdruck Pression de service			Flow Rate Portata Durchflussmenge Débit		Min Burst Pressures Min Pressione di scoppio Berstdruck Pression d'éclatement		
					@ 0,2 MPa pressure drop				
mm	inch.	MPa (PSI)	MPa (PSI)	MPa (PSI)	l/min (GPM)	MPa (PSI)	MPa (PSI)	MPa (PSI)	
20	3/4"	35 (5075)	46 (6650)	46 (6650)	120 (32)	140 (20300)	140 (20300)	160 (23200)	
25	1"	46 (6650)	35 (5075)	46 (6650)	200 (53)	140 (20300)	140 (20300)	160 (23200)	
40	1-1/2"	35 (5075)	35 (5075)	40 (5800)	420 (111)	160 (23200)	140 (20300)	160 (23200)	
50	2"	30 (4350)	30 (4350)	35 (5075)	750 (198)	80 (11600)	100 (14500)	120 (17400)	

	Technical Specifications	Specifiche Tecniche	Technische Daten	Caractéristiques Techniques
	FEMALE: high grade steel carbonitrided wearing parts MALE: high grade carbon steel induction hardened	FEMMINA: in acciaio con parti sollecitate carbonitrate MASCIO: in acciaio al carbonio temprato ad induzione	MUFFE: Hochwehrtiger Karbonnitritstahl in besonders beanspruchten Zonen STECKER: Hochwehrtiger Karbonstahl induktionsgehärtet	FEMELLE: Acier avec zones d'usure carbonitrurées MALE: acier à haute teneur trempés par induction
	Polyurethane and NBR Backup ring in PTFE	Polyuretano e NBR Anello antiestrusione PTFE	Polyurethan und NBR Stützring in PTFE	Polyuréthane et NBR Anneau anti-extrusion en PTFE
	-25°C to +100°C (-13°F to +212°F)	-25°C a +100°C (-13°F a +212°F)	-25°C bis +100°C (-13°F bis +212°F)	-25°C à +100°C (-13°F à +212°F)
	Mate 1000®	Mate 1000®	Mate 1000®	Mate 1000®
	100.000 cycles at max rated working pressure disconnected 1.000.000 cycles at max. rated working pressure connected	100.000 cicli alla massima pressione d'esercizio ad innesti disconnessi 1.000.000 di cicli alla massima pressione d'esercizio ad innesti connessi	100.000 Impulse mit maximalem Arbeitsdruck entkuppelt 1.000.000 Impulse mit maximalem Arbeitsdruck gekuppelt	100.000 cycles à la pression de service maximal, déconnecté 1.000.000 de cycles à la pression de service maximal connecté



Thread Adapter - Adattatore Filettato - Gewindeadapter - Raccordement Fileté

Size Base BG Taille		Part Number Codice Articolo Artikelnummer Désignation		Thread Filetto Anschluss Filetage		B	C	L	D	H	X / Y	Weight Peso Gewicht Poids	Package Confezione Verpackung Colis
		Female Femmina Muffe Femelle	Male Maschio Stecker Male	A	E								
mm	Inch.			mm (in)	mm (in)	mm (in)	mm (in)	mm (in)	mm (in)	mm (in)	mm (in)	g (lbs)	No.
20	3/4"	FHV12 34GAS F	FHV12 34GAS M	3/4" BSP Female	3/4" BSP Female	122 (4.80)	123 (4.84)	207 (8.15)	60 (2.36)	55 (2.17)	46 (1.81)		
20	3/4"	FHV12 34SAE F	FHV12 34SAE M	1 1/16" UN Female	1 1/16" UN Female	122 (4.80)	123 (4.84)	207 (8.15)	60 (2.36)	55 (2.17)	46 (1.81)		
25	1"	FHV16 1GAS F	FHV16 1GAS M	1" BSP Female	1" BSP Female	129 (5.08)	144 (5.67)	231 (9.09)	70 (2.76)	64 (2.52)	55 (2.17)		
25	1"	FHV16 114GAS F	FHV16 114GAS M	1-1/4" BSP Female	1-1/4" BSP Female	129 (5.08)	144 (5.67)	231 (9.09)	70 (2.76)	64 (2.52)	55 (2.17)		
25	1"	FHV16 114NPT F	FHV16 114NPT M	1-1/4" NPTF Female	1-1/4" NPTF Female	129 (5.08)	144 (5.67)	231 (9.09)	70 (2.76)	64 (2.52)	55 (2.17)		
25	1"	FHV16 1SAE F	FHV16 1SAE M	1-5/16" UN Female ORB	1-5/16" UN Female ORB	129 (5.08)	144 (5.67)	231 (9.09)	70 (2.76)	64 (2.52)	55 (2.17)		
40	1-1/2"	FHV24 112GAS F	FHV24 112GAS M	1-1/2" BSP Female	1-1/2" BSP Female	157 (6.18)	187 (7.36)	295 (11.61)	95 (3.74)	83 (3.27)	65 (2.56)		
40	1-1/2"	FHV24 112NPT F	FHV24 112NPT M	1-1/2" NPTF Female	1-1/2" NPTF Female	157 (6.18)	187 (7.36)	295 (11.61)	95 (3.74)	83 (3.27)	65 (2.56)		
50	2"	FHV32 2NPT F	FHV32 2NPT M	2" NPTF Female	2" NPTF Female	187 (7.36)	231 (9.09)	369 (14.53)	122 (4.80)	115 (4.53)	85 (3.35)		

ISO A - ISO B - Standard
ISO A - ISO B - Standard
ISO A - ISO B - Standard
ISO A - ISO B - Standard

Agricoltura
Agricoltura
Ausführung Agritechnik
Agricoltura

Screw Together
Innesti a Vite
Schnabkuppungen
A Visser

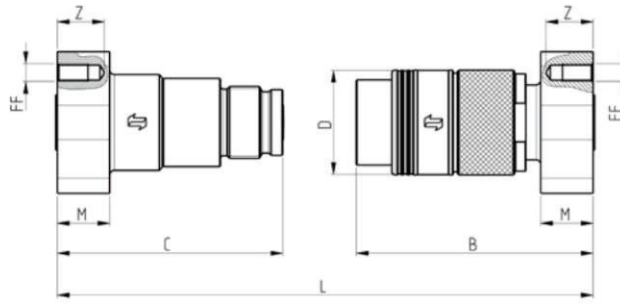
Check Valves
Valvole Unidirezionali
Rückschventile
Clapet Anti-retour

Diagnostic
Diagnostici
Diagnostik Kupplung
Diagnostik

Flat Face
Innesti Faccia Piana
Flachdichtend
Clapet a Facca Plat

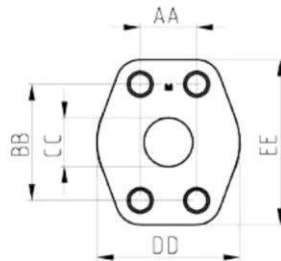
Multifaster
Multiconnessioni
Multikuppungen
Multifaster

FHV

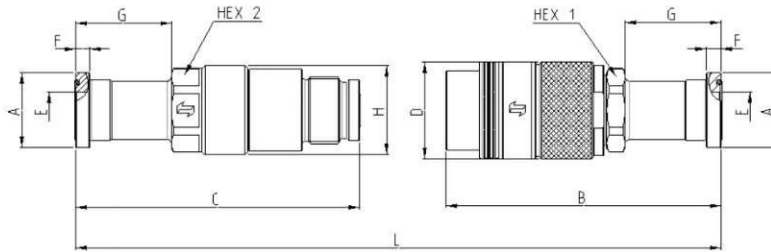


Flange Adapter - Adattatore con Flangia - Flanschadapter - Recordement Bride (ISO 6162-2)

Size Base BG Taille		Part Number Codice Articolo Artikelnummer Désignation		B	C	L	D	H	M	Z	FF	Weight Peso Gewicht Poids	Package Confezione Verpackung Colis
		Female Femmina Muffe Femelle	Male Maschio Stecker Male	mm (in)	mm (in)	mm (in)	mm (in)	mm (in)	mm (in)	mm (in)	Metric	g (lbs)	No.
25	1"	FHV16-44/16 F	FHV16-44/16 M	158 (6.22)	151 (5.94)	267 (10.51)	70 (2.76)	64 (2.52)	35 (1.38)	23.5 (0.93)	4*M12x1.75		
25	1"	FHV16-44/20 F	FHV16-44/20 M	158 (6.22)	151 (5.94)	267 (10.51)	70 (2.76)	64 (2.52)	35 (1.38)	20.5 (0.81)	4*M12x1.75		
40	1-1/2"	FHV24-44/24 F	FHV24-44/24 M	192 (7.56)	197 (7.76)	340 (13.39)	95 (3.74)	83 (3.27)	46 (1.81)	27.5 (1.08)	4*M16x2		
50	2"	FHV32-44/32 F	FHV32-44/32 M	230 (9.06)	253 (9.96)	427 (16.81)	122 (4.80)	115 (4.53)	50 (1.97)	35 (1.38)	4*M20x2.5		



Size Base BG Taille		Part Number Codice Articolo Artikelnummer Désignation		BB	AA	CC	EE	DD
		Female Femmina Muffe Femelle	Male Maschio Stecker Male	mm (in)	mm (in)	mm (in)	mm (in)	mm (in)
25	1"	FHV16-44/16 F	FHV16-44/16 M	57.2 (2.25)	27.8 (1.09)	25 (0.98)	81 (3.19)	70 (2.76)
25	1"	FHV16-44/20 F	FHV16-44/20 M	66.6 (2.62)	31.8 (1.25)	32 (1.26)	95.2 (3.75)	78 (3.07)
40	1-1/2"	FHV24-44/24 F	FHV24-44/24 M	79.3 (3.12)	36.5 (1.44)	38 (1.50)	112.8 (4.44)	95 (3.74)
50	2"	FHV32-44/32 F	FHV32-44/32 M	96.8 (3.81)	44.5 (1.75)	51 (2.00)	132.8 (5.23)	114 (4.49)



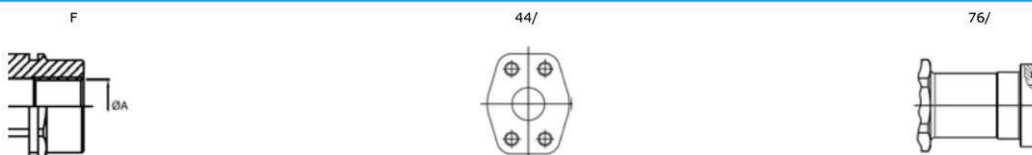
Flange Head Adapter - Codolo per Flangia - Flanschelleradapter - Fixation raccordement Bride (ISO 6162-2)

Size Base BG Taille		Part Number Codice Articolo Artikelnummer Désignation		A	B	C	L	D	H	E	F	G	HEX 1	HEX 2	Weight Peso Gewicht Poids	Package Confezione Verpackung Colls
mm	inch.	Female Femmina Muffe Femelle	Male Maschio Stecker Male	mm (in)	mm (in)	mm (in)	mm (in)	mm (in)	mm (in)	mm (in)	mm (in)	mm (in)	mm (in)	mm (in)	g (lbs)	No.
25	1"	FHV16-76/16 F	FHV16-76/16 M	47.6 (1.87)	191 (7.52)	198 (7.80)	347 (13.66)	70 (2.76)	64 (2.52)	25 (0.98)	9.5 (0.37)	62 (2.44)	55 (2.17)	55 (2.17)		
25	1"	FHV16-76/20 F	FHV16-76/20 M	54 (2.13)	198 (7.80)	205 (8.07)	361 (14.21)	70 (2.76)	64 (2.52)	32 (1.26)	10.3 (0.41)	69 (2.72)	55 (2.17)	55 (2.17)		
40	1-1/2"	FHV24-76/24 F	FHV24-76/24 M	63.5 (2.50)	236 (9.29)	247 (9.72)	434 (17.09)	95 (3.74)	83 (3.27)	38 (1.50)	12.6 (0.50)	79 (3.11)	65 (2.56)	75 (2.95)		
50	2"	FHV32-76/32 F	FHV32-76/32 M	79.4 (3.13)	288 (11.34)	332 (13.07)	558 (21.97)	122 (4.80)	115 (4.53)	51 (2.00)	12.6 (0.50)	95 (3.74)	85 (3.35)	85 (3.35)		

Accessories - Accessori - Zubehör - Accessoires

Size Base BG Taille	Dust protections Tappi Protezione Staubschutzteile Capuchons		Dust protections Tappi Protezione Staubschutzteile Capuchons	
	Aluminum		Aluminum	
mm	inch.	Part Number Codice Articolo Artikelnummer Désignation	Part Number Codice Articolo Artikelnummer Désignation	
20	3/4"			
25	1"	TF FHV16 S	TM FHV16 S	
40	1-1/2"	TF FHV24 S	TM FHV24 S	
50	2"	TF FHV32 S	TM FHV32 S	

Thread Filetto Anschluss Filetage



ISO A - ISO B - Standard
ISO A - ISO B - Standard
ISO A - ISO B - Standard
ISO A - ISO B - Standard

Agricoltura
Agricoltura
Ausführung Agritechnik
Agricoltura

Screw Together
Innesti a Vite
Schnabkuppungen
A Visser

Check Valves
Valvole Unidirezionali
Rückschventile
Clapet Anti-retour

Diagnostic
Diagnostici
Diagnostik Kupplung
Diagnostic

Flat Face
Innesti Faccia Piana
Flachdichtend
Clapet a Facca Piat

Multifaster
Multiconessioni
Multikuppungen
Multifaster