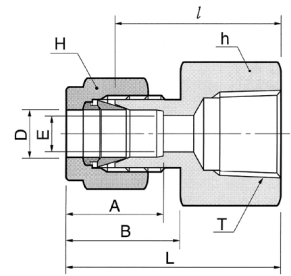
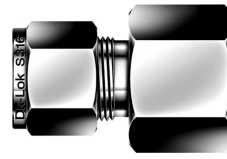


Złącze proste z gwintem wewnętrznym NPT

Wartości ciśnień dla złączki DCF-N znajdują się w tabeli nr 21 na stronie 13



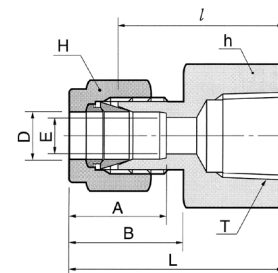
Połączenie rury stalowej z zewnętrznym gwintem NPT

DCF-...-...N

| Kod | Śr. zewn. rury | | T NPT | E min | Odległość powierzchni płaskich | | | | A | B | l | L |
|------------|----------------|-------|----------|----------|--------------------------------|-------|---------|-------|-------|-------|-------|--------|
| | D in | mm | | | h in | mm | H in | mm | | | | |
| DCF-1-1N | 1/16 | 1.59 | 1/16 | 1.27 | 7/16 | 11.11 | 5/16 | 7.93 | 8.63 | 10.92 | 19.81 | 23.62 |
| DCF-1-2N | 1/16 | 1.59 | 1/8 | 1.27 | 9/16 | 14.28 | 5/16 | 7.93 | 8.63 | 10.92 | 20.57 | 24.38 |
| DCF-2-2N | 1/8 | 3.17 | 1/8 | 2.28 | 9/16 | 14.28 | 7/16 | 11.11 | 12.70 | 15.24 | 22.09 | 28.70 |
| DCF-2-4N | 1/8 | 3.17 | 1/4 | 2.28 | 3/4 | 19.05 | 7/16 | 11.11 | 12.70 | 15.24 | 26.92 | 33.52 |
| DCF-3-2N | 3/16 | 4.76 | 1/8 | 3.04 | 9/16 | 14.28 | 1/2 | 12.70 | 13.71 | 16.00 | 23.11 | 29.71 |
| DCF-4-2N | 1/4 | 6.35 | 1/8 | 4.82 | 9/16 | 14.28 | 9/16 | 14.28 | 15.24 | 17.78 | 23.87 | 31.24 |
| DCF-4-4N | 1/4 | 6.35 | 1/4 | 4.82 | 3/4 | 19.05 | 9/16 | 14.28 | 15.24 | 17.78 | 28.44 | 35.81 |
| DCF-4-6N | 1/4 | 6.35 | 3/8 | 4.82 | 7/8 | 22.22 | 9/16 | 14.28 | 15.24 | 17.78 | 30.22 | 37.59 |
| DCF-4-8N | 1/4 | 6.35 | 1/2 | 4.82 | 1-1/16 | 26.98 | 9/16 | 14.28 | 15.24 | 17.78 | 35.05 | 42.41 |
| DCF-5-2N | 5/16 | 7.93 | 1/8 | 6.35 | 9/16 | 14.28 | 5/8 | 15.87 | 16.25 | 18.54 | 24.63 | 32.00 |
| DCF-5-4N | 5/16 | 7.93 | 1/4 | 6.35 | 3/4 | 19.05 | 5/8 | 15.87 | 16.25 | 18.54 | 29.46 | 36.83 |
| DCF-6-2N | 3/8 | 9.52 | 1/8 | 7.11 | 5/8 | 15.87 | 11/16 | 17.46 | 16.76 | 19.30 | 25.40 | 32.76 |
| DCF-6-4N | 3/8 | 9.52 | 1/4 | 7.11 | 3/4 | 19.05 | 11/16 | 17.46 | 16.76 | 19.30 | 30.22 | 37.59 |
| DCF-6-6N | 3/8 | 9.52 | 3/8 | 7.11 | 7/8 | 22.22 | 11/16 | 17.46 | 16.76 | 19.30 | 31.75 | 39.11 |
| DCF-6-8N | 3/8 | 9.52 | 1/2 | 7.11 | 1-1/16 | 26.98 | 11/16 | 17.46 | 16.76 | 19.30 | 36.57 | 43.94 |
| DCF-6-12N | 3/8 | 9.52 | 3/4 | 7.11 | 1-5/16 | 33.33 | 11/16 | 17.46 | 16.76 | 19.30 | 40.38 | 47.75 |
| DCF-8-4N | 1/2 | 12.70 | 1/4 | 10.41 | 1-3/16 | 20.64 | 7/8 | 22.22 | 22.86 | 21.84 | 30.22 | 40.38 |
| DCF-8-6N | 1/2 | 12.70 | 3/8 | 10.41 | 7/8 | 22.22 | 7/8 | 22.22 | 22.86 | 21.84 | 31.75 | 41.91 |
| DCF-8-8N | 1/2 | 12.70 | 1/2 | 10.41 | 1-1/16 | 26.98 | 7/8 | 22.22 | 22.86 | 21.84 | 36.57 | 46.73 |
| DCF-8-12N | 1/2 | 12.70 | 3/4 | 10.41 | 1-5/16 | 33.33 | 7/8 | 22.22 | 22.86 | 21.84 | 38.10 | 48.26 |
| DCF-10-6N | 5/8 | 15.87 | 3/8 | 12.70 | 15/16 | 23.81 | 1 | 25.40 | 24.38 | 21.84 | 31.75 | 41.91 |
| DCF-10-8N | 5/8 | 15.87 | 1/2 | 12.70 | 1-1/16 | 26.98 | 1 | 25.40 | 24.38 | 21.84 | 36.57 | 46.73 |
| DCF-10-12N | 5/8 | 15.87 | 3/4 | 12.70 | 1-5/16 | 33.33 | 1 | 25.40 | 24.38 | 21.84 | 38.10 | 48.26 |
| DCF-12-8N | 3/4 | 19.05 | 1/2 | 15.74 | 1-1/16 | 26.98 | 1-1/8 | 28.58 | 24.38 | 21.84 | 36.57 | 46.73 |
| DCF-12-12N | 3/4 | 19.05 | 3/4 | 15.74 | 1-5/16 | 33.33 | 1-1/8 | 28.58 | 24.38 | 21.84 | 38.10 | 48.26 |
| DCF-14-12N | 7/8 | 22.22 | 3/4 | 18.28 | 1-5/16 | 33.33 | 1-1/4 | 31.75 | 25.90 | 21.84 | 39.62 | 49.78 |
| DCF-16-12N | 1 | 25.40 | 3/4 | 22.35 | 1-3/8 | 34.92 | 1-1/2 | 38.10 | 31.24 | 26.41 | 41.14 | 53.34 |
| DCF-16-16N | 1 | 25.40 | 1 | 22.35 | 1-5/8 | 41.27 | 1-1/2 | 38.10 | 31.24 | 26.41 | 50.03 | 62.23 |
| DCF-20-20N | 1-1/4 | 31.75 | 1-1/4 | 27.68 | 2-1/8 | 53.98 | 1-7/8 | 47.63 | 41.14 | 38.86 | 52.57 | 74.67 |
| DCF-24-24N | 1-1/2 | 38.10 | 1-1/2 | 33.90 | 2-3/8 | 60.33 | 2-1/4 | 57.15 | 50.03 | 45.21 | 56.13 | 83.31 |
| DCF-32-32N | 2 | 50.80 | 2 | 45.97 | 2-1/8 | 73.03 | 3 | 76.20 | 67.56 | 62.73 | 64.26 | 101.60 |

Złącze proste z gwintem wewnętrznym NPT

Wartości ciśnień dla złączki DCF-N znajdują się w tabeli nr 21 na stronie 13



Połączenie rury metrycznej z zewnętrznym gwintem NPT

DCF-...M-...N

| Kod | Śr. zewn. rury D | T NPT | E min | Odl. pow. płaskich | | A | B | l | L |
|-------------|---------------------|----------|----------|--------------------|----|------|------|------|------|
| | | | | h | H | | | | |
| DCF-3M-2N | 3 | 1/8 | 2.4 | 14 | 12 | 12.9 | 15.3 | 22.1 | 28.7 |
| DCF-3M-4N | 3 | 1/4 | 2.4 | 19 | 12 | 12.9 | 15.3 | 26.9 | 33.5 |
| DCF-4M-2N | 4 | 1/8 | 2.4 | 14 | 12 | 13.7 | 16.1 | 23.1 | 29.7 |
| DCF-6M-2N | 6 | 1/8 | 4.8 | 14 | 14 | 15.3 | 17.7 | 23.9 | 31.3 |
| DCF-6M-4N | 6 | 1/4 | 4.8 | 19 | 14 | 15.3 | 17.7 | 28.4 | 35.8 |
| DCF-6M-6N | 6 | 3/8 | 4.8 | 22 | 14 | 15.3 | 17.7 | 29.5 | 36.9 |
| DCF-6M-8N | 6 | 1/2 | 4.8 | 27 | 14 | 15.3 | 17.7 | 35.1 | 42.5 |
| DCF-8M-2N | 8 | 1/8 | 6.4 | 15 | 16 | 16.2 | 18.6 | 24.6 | 32.1 |
| DCF-8M-4N | 8 | 1/4 | 6.4 | 19 | 16 | 16.2 | 18.6 | 29.5 | 37.0 |
| DCF-8M-6N | 8 | 3/8 | 6.4 | 22 | 16 | 16.2 | 18.6 | 30.2 | 37.7 |
| DCF-8M-8N | 8 | 1/2 | 6.4 | 27 | 16 | 16.2 | 18.6 | 35.8 | 43.3 |
| DCF-10M-2N | 10 | 1/8 | 7.9 | 18 | 19 | 17.2 | 19.5 | 25.4 | 33.0 |
| DCF-10M-4N | 10 | 1/4 | 7.9 | 19 | 19 | 17.2 | 19.5 | 30.2 | 37.8 |
| DCF-10M-6N | 10 | 3/8 | 7.9 | 22 | 19 | 17.2 | 19.5 | 31.0 | 38.6 |
| DCF-10M-8N | 10 | 1/2 | 7.9 | 27 | 19 | 17.2 | 19.5 | 36.6 | 44.2 |
| DCF-12M-2N | 12 | 1/8 | 8.3 | 22 | 22 | 22.8 | 22.0 | 28.4 | 38.5 |
| DCF-12M-4N | 12 | 1/4 | 9.5 | 22 | 22 | 22.8 | 22.0 | 30.2 | 40.3 |
| DCF-12M-6N | 12 | 3/8 | 9.5 | 22 | 22 | 22.8 | 22.0 | 31.0 | 41.1 |
| DCF-12M-8N | 12 | 1/2 | 9.5 | 27 | 22 | 22.8 | 22.0 | 36.6 | 46.7 |
| DCF-12M-12N | 12 | 3/4 | 9.5 | 35 | 22 | 22.8 | 22.0 | 38.9 | 49.0 |
| DCF-15M-8N | 15 | 1/2 | 11.9 | 27 | 25 | 24.4 | 22.0 | 36.6 | 46.7 |
| DCF-16M-8N | 16 | 1/2 | 12.7 | 27 | 25 | 24.4 | 22.0 | 36.8 | 46.9 |
| DCF-20M-8N | 20 | 1/2 | 15.9 | 30 | 32 | 26.0 | 22.0 | 37.8 | 47.9 |
| DCF-20M-12N | 20 | 3/4 | 15.9 | 35 | 32 | 26.0 | 22.0 | 39.6 | 49.7 |
| DCF-22M-12N | 22 | 3/4 | 18.3 | 35 | 32 | 26.0 | 22.0 | 39.6 | 49.7 |
| DCF-22M-16N | 22 | 1 | 18.3 | 41 | 32 | 26.0 | 22.0 | 47.8 | 57.9 |
| DCF-25M-12N | 25 | 3/4 | 21.8 | 35 | 38 | 31.3 | 26.5 | 41.1 | 53.4 |
| DCF-25M-16N | 25 | 1 | 21.8 | 41 | 38 | 31.3 | 26.5 | 50.0 | 62.3 |