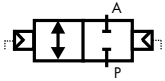


2/2 WAY PISTON ACTUATED VALVE G 1/2" ÷ 2" DOUBLE ACTING – BRONZE



double acting
flow over / under seat

TECHNICAL SPECIFICATIONS

- Media: water, oil, air, aggressive media and steam ①
- Media temperature: -10°C ÷ +180°C
- Ambient temperature: -10°C ÷ +60°C
- Pilot media: air, inert gases
- Body material: bronze (CB491K EN 1982)
- Bonnet material: brass (CW617N EN 12165)
- Actuator body material: Polyamide PA6 (reinforced fiberglass 30%)
- Seal material: PTFE type TFM 1600
- Position indicator as standard

BENEFITS

- Waterhammer-free design (with flow direction 2→1)
- Actuator housing rotation 360°

OPTIONS

- Manual override (e.g. Code DCG205STWM0) see page 28
- Stroke regulator (e.g. Code DCG210STJR0) see page 28
- Travel switch (e.g. Code DCG208STZL0) see page 28
- Design for vacuum applications up to 10⁻² mbar (e.g. Code DCG205STW0V)
- NPT Connection (e.g. Code DCN205STW00)

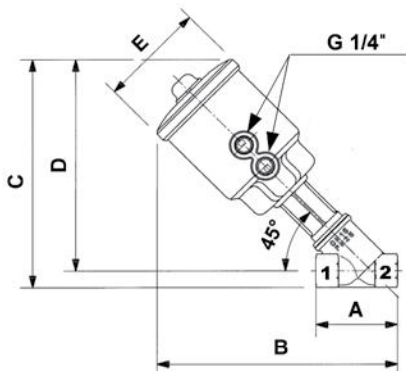
TYPE: REGULAR DA



SELECTION TABLE

| VALVE | Connection | DN | Flow rate Kvs | Working pressure ① | | Flow direction | Pilot pressure ② | | Actuator Ø |
|-------------|-------------|------|------------------|--------------------|--------|----------------|------------------|------------|---------------|
| | | | | min | max | | min | max | |
| Code | [ISO 228 G] | [mm] | [l/min] | [barg] | [barg] | - | min [barg] | max [barg] | [mm] |
| DCG205STW00 | 1/2" | 15 | 87 | 0 | 16 | 1 ↔ 2 | 1.8 | 2 | 63 |
| DCG206STX00 | 3/4" | 20 | 164 | 0 | 16 | 1 ↔ 2 | 2 | 3.8 | |
| DCG207STY00 | 1" | 25 | 260 | 0 | 16 | 1 ↔ 2 | 3 | 5 | |
| DCG208STZ00 | 1 1/4" | 32 | 410 | 0 | 16 | 1 ↔ 2 | 4.5 | 6 | |
| DCG209STK00 | 1 1/2" | 40 | 700 | 0 | 16 | 1 ↔ 2 | 6.5 | 7 | |
| DCG210STJ00 | 2" | 50 | 950 | 0 | 12 | 1 ↔ 2 | 9 | 10 | |

① Steam: max working pressure 10 bar (9 barg); ② Minimum pilot pressure at the max working pressure; for lower working pressures please refer to the comparative charts



DIMENSIONS & WEIGHTS

| Connection | Actuator Ø | A | B | C | D | E | Weight |
|-------------|---------------|------|------|------|------|------|--------|
| [ISO 228 G] | [mm] | [mm] | [mm] | [mm] | [mm] | [mm] | [kg] |
| 1/2" | 63 | 65 | 192 | 184 | 171 | 85 | 1.2 |
| 3/4" | 63 | 75 | 198 | 192 | 176 | 85 | 1.3 |
| 1" | 63 | 90 | 212 | 205 | 185 | 85 | 1.5 |
| 1 1/4" | 63 | 110 | 225 | 217 | 193 | 85 | 1.9 |
| 1 1/2" | 63 | 120 | 230 | 225 | 198 | 85 | 2.1 |
| 2" | 63 | 150 | 248 | 241 | 207 | 85 | 2.9 |