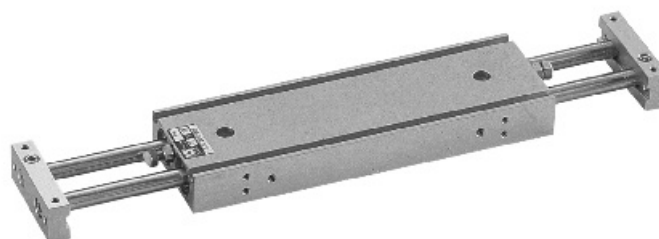


Pos.	Item	Qty.	Pos.	Item	Qty.
1	plug	4	9	bush seal	4
2	stroke adjuster	2	10	bushing	4
3	lock nut	2	11	piston seal	2
4	circlip	4	12	seal	2
5	plate	2	13	piston	2
6	piston rod	2	14	piston cushion washer	4
7	bush cushion washer	4	15	body	1
8	piston rod seal	4	16	rod stop screw	4



Ordering code

6210.Ø.stroke.
 { 10
 { 15
 { 25 } C = Fixed body
 { } P = Fixed end plates

Magnetic sensors: see page 2.13

Construction characteristics

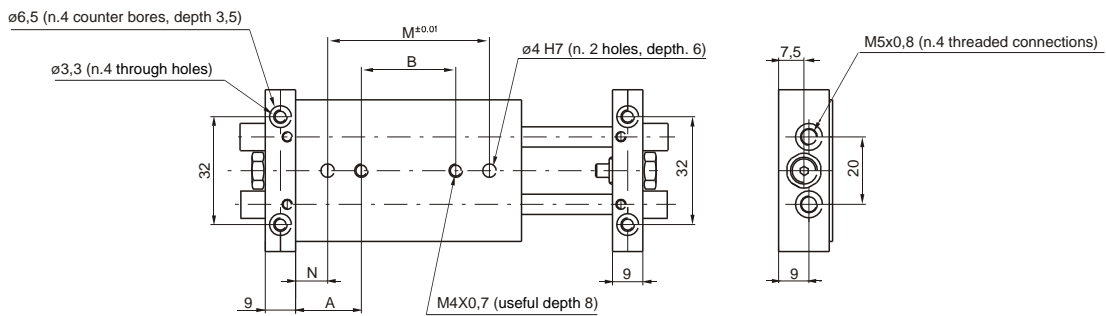
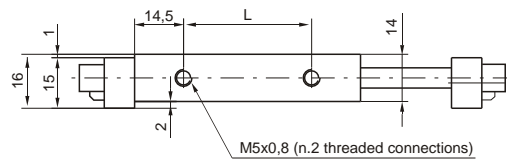
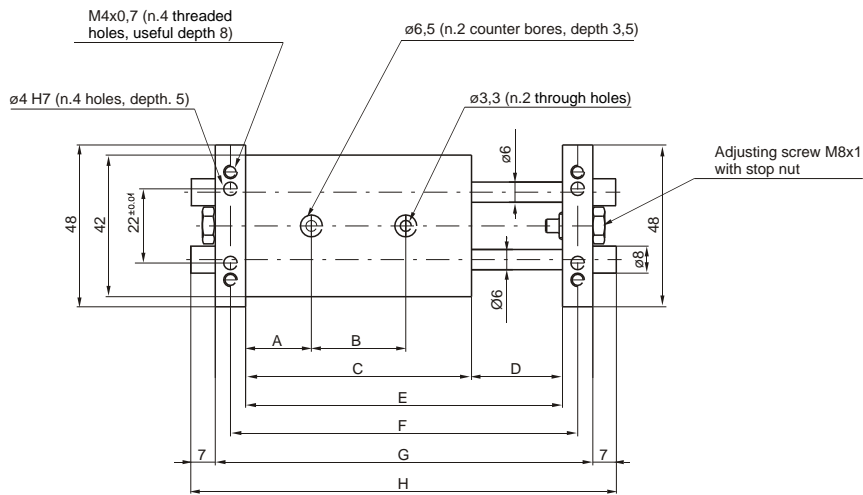
Body	oxidated aluminium alloy
Rods	chromed C43 steel
Piston	aluminium
Piston rod bushing	brass
Endplate	oxidated aluminium
Piston seal	oil resistant NBR rubber
Piston rod seal	self-lubricating polyurethane compound
Plate	oxidated aluminium

Technical characteristics

Function	double acting
Fluid	filtered and non lubricated air
Max pressure	10 bar
Operating temperature	-5°C ÷ +70°C
Cushioning	with decelerator (available on request)

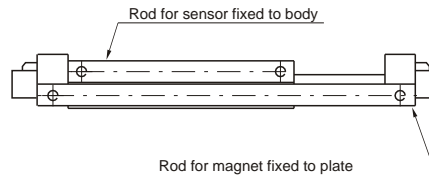
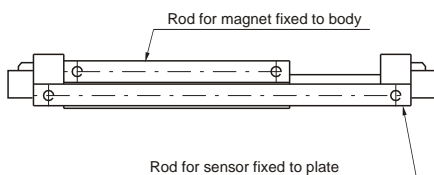
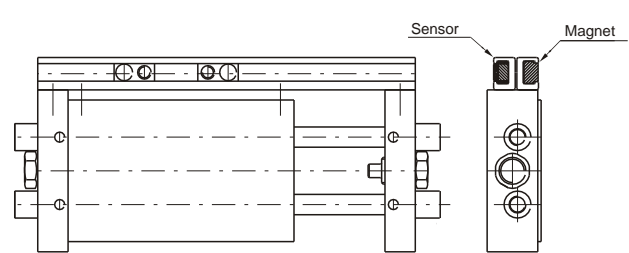
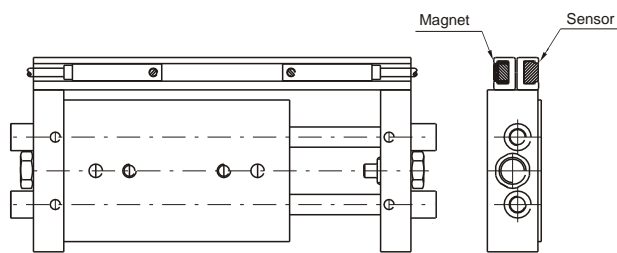
Standard Stroke and weight

Bore	Stroke (mm)							
	25	50	75	100	125	150	175	200
Ø10	●	●	●	●				
Ø15	●	●	●	●	●	●	●	●
Ø25	●	●	●	●	●	●	●	●
Bore	Weight (gr)							
Ø10	160	230	280	310				
Ø15	240	350	450	550	670	750	900	1000
Ø25	950	1140	1350	1600	1800	2000	2300	2500



MOUNTING WITH FIXED PLACE

MOUNTING WITH A FIXED BODY

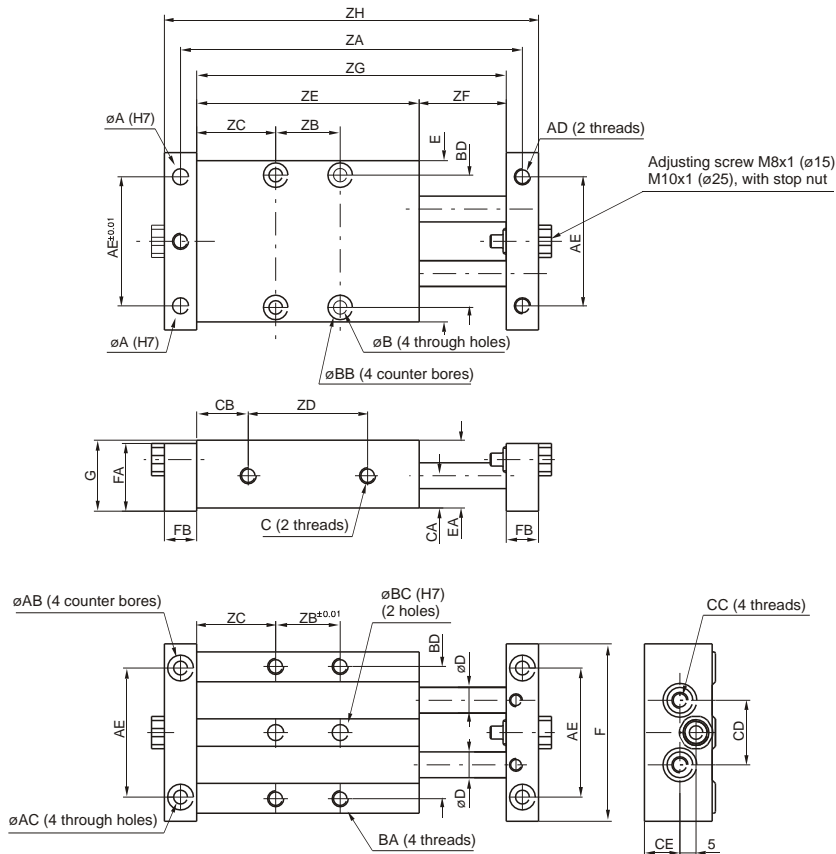


Stroke	A	B	C	D	E	F	G	H	L	M	N
25	20	28	67	27	94	103	112	126	38	48	9,5
50	30	32	92	52	144	153	162	176	63	52	20
75	35	47	117	77	194	203	212	226	88	67	25
100	35	72	142	102	244	253	262	276	113	92	25



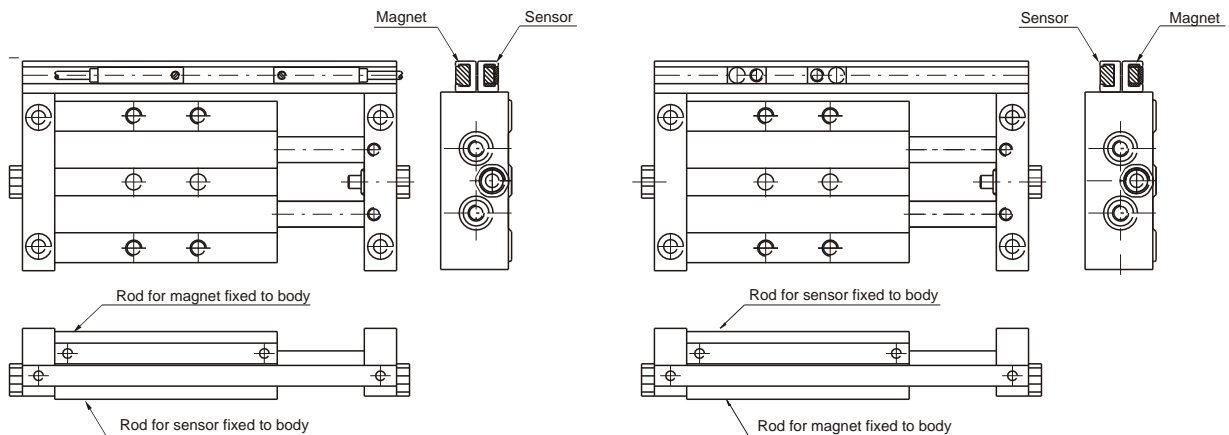
Push/pull twin rod slide units
Overall dimensions Ø 15-25

Series 6210



MOUNTING WITH FIXED PLACE

MOUNTING WITH FIXED BODY



Bore	ØA (H7)	ØAB	ØAC	ØAD	AE	ØB	BA	ØBB	ØBC (H7)	BD	C	CA	CB
15	5 (depth6)	8 (depth4)	4,3	M5x0,8 (usef ul d ept h 10)	40	4,3	M5x0,8 (usef ul d ept h 10)	7,6 (depth4,4)	5 (depth6)	41	M5x0,8	10	16
25	6 (depth8)	9 (d ept h 5)	5,2	M6x1 (usef ul d ept h 12)	67	5,2	M6x1 (usef ul d ept h 12)	9,5 (d ept h 5,4)	6 (depth8)	67	G1/8	16	18,5

Bore	CC	CD	CE	ØD	E	EA	F	FA	FB	G
15	M5x0,8	20	11	8	50	21	55	21	10	22
25	G1/8	35	18	14	79	32	84	32	16	34

Stroke	Bore Ø15								Bore Ø25							
	ZA	ZB	ZC	ZD	ZE	ZF	ZG	ZH	ZA	ZB	ZC	ZD	ZE	ZF	ZG	ZH
25	106	20	24,5	37	69	27	96	116	125	25	28,5	45	82	27	109	141
50	156	45	24,5	62	94	52	146	166	175	45	31	70	107	52	159	191
75	206	65	27	87	119	77	196	216	225	65	33,5	95	132	77	209	241
100	256	90	27	112	144	102	246	266	275	90	33,5	120	157	102	259	291
125	306	90	39,5	137	169	127	296	316	325	90	46	145	182	127	309	341
150	356	90	52	162	194	152	346	366	375	90	58,5	170	207	152	359	391
175	406	90	64,5	187	219	177	396	416	425	90	71	190	232	177	409	441
200	456	90	77	212	244	202	446	466	475	90	83,5	220	257	202	459	491

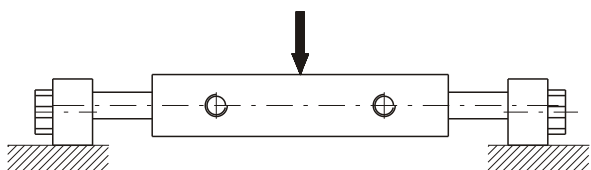
Theoretical force

Bore	Effective area (mm ²)	Force (N)							
		2	3	4	5	6	7	8	9
10	101	20	30	40	51	61	71	81	91
15	207	41	62	83	104	124	145	166	186
25	597	119	179	239	299	358	418	478	537
		Working pressure (bar)							

Deflection of piston rods

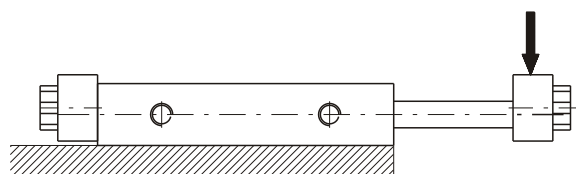
Applied load to body centre

Bore	Load (N)	Deflection (mm)	
		100	200
10	10	0,07	/
15	30	0,08	0,28
25	60	0,02	0,08
		Stroke	



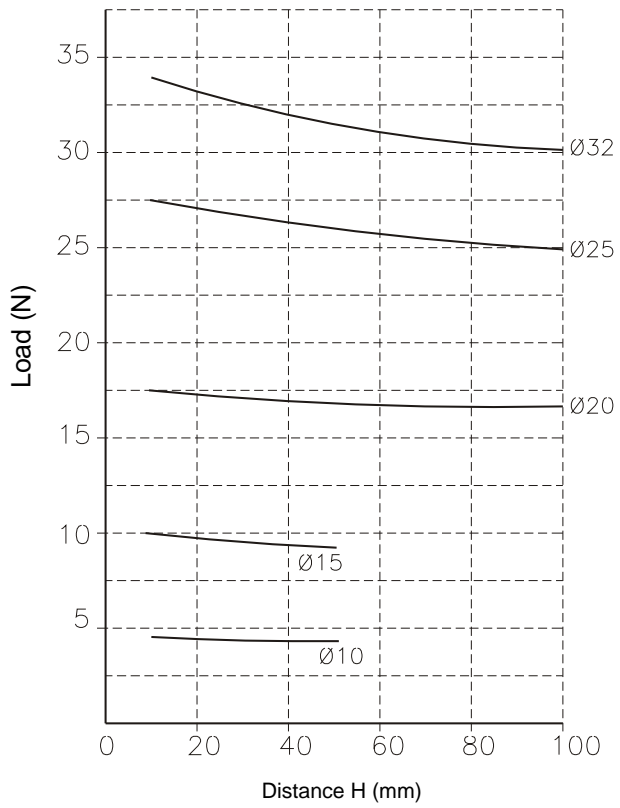
Applied load to plate centre

Bore	Load (N)	Deflection (mm)			
		50	100	150	200
10	3	0,06	0,3	/	/
15	5	0,1	0,2	0,5	1
25	10	0,03	0,1	0,15	0,25
		Stroke			

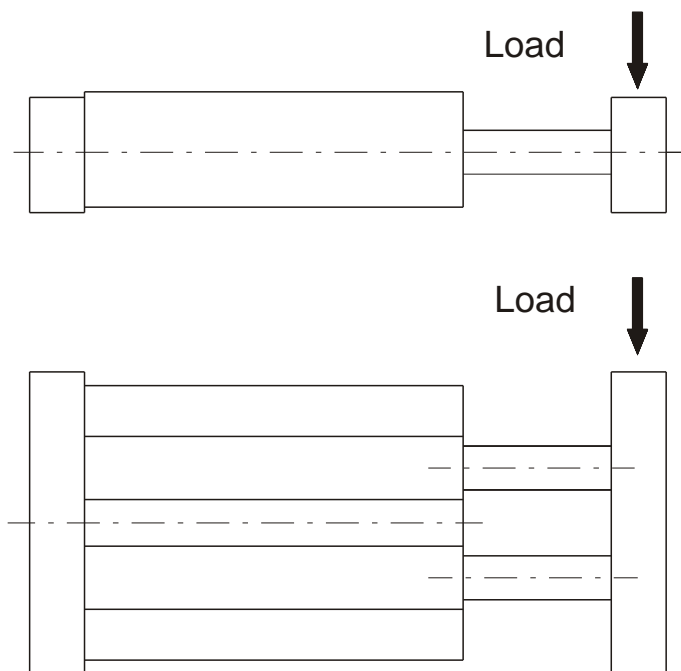
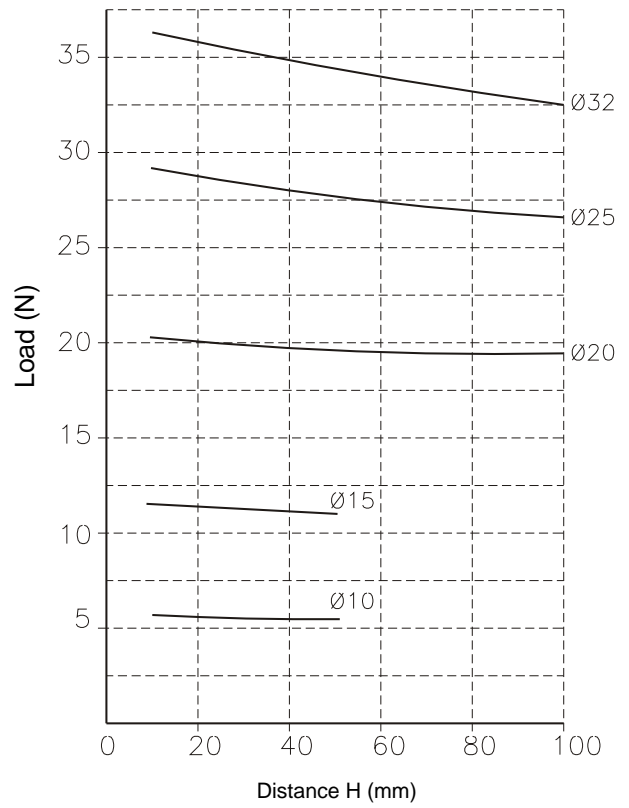




Control unit with bronze bushes



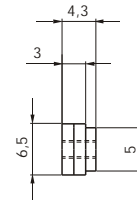
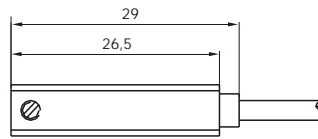
Control unit with bearing bushes



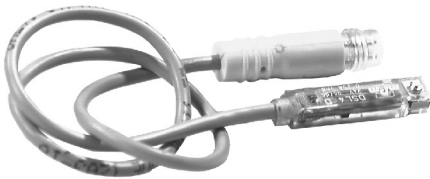
Sensor c/w 2,5 m. cable



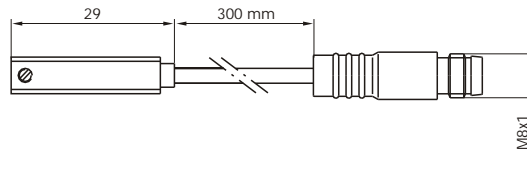
Weight gr. 27



Sensor c/w M8 connector (300 mm cable)



Weight gr. 15



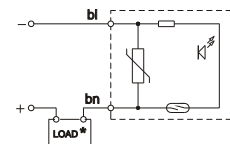
Ordering codes

1580.U	Reed bulb sensor with led and 2.5 m cable
1580.HAP	PNP sensor Hall effect with led and 2.5 m cable
MRS.U	Reed bulb sensor with led and connector
MHS.P	PNP sensor Hall effect with led and connector
MC1	M8 in line connector with 2.5 m cable (2 wires)
MC2	M8 in line connector with 5 m cable (2 wires)
MCH1	M8 in line connector with 2.5 m cable (3 wires)
MCH2	M8 in line connector with 5 m cable (3 wires)

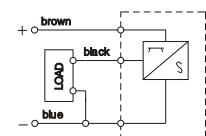
Technical characteristics

	1580.U	MRS.U	1580.HAP	MHS.P
Type of contact	N.A.			
Maximum current (pulses of 0.5 sec)	0,1A		0,2A	
Maximum permanent current	0,1A		0,2A	
Maximum permanent power	6VA		4W	
Voltage range A.C.	3 ÷ 30V		/	
Voltage range D.C.	3 ÷ 30V		12 ÷ 30V	
Working temperature	-20° C ÷ 70° C			
Maximum voltage drop	3V			
Cable section	2x0,14		3x0,14	
Degree of protection	IP 65			
Connecting time	0,5 ms		0,8 ms	
Disconnecting time	0,1 ms		0,3 ms	
Average life (operations)	10 ⁷		10 ⁹	
Repetition of intervention point	± 0,1			

Diagrams and connection



With Reed bulb



Hall effect

NOTE: Pay attention to the connected loads which should not exceed recommendations

*Reed bulb sensor: connection can be made either to negative or positive pole