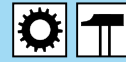




Nominal Diameter

5,5 = 25 mm<sup>2</sup>

RECTUS Series



19KA

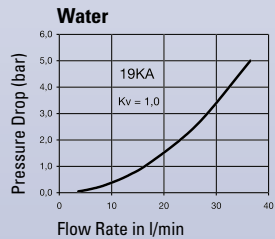
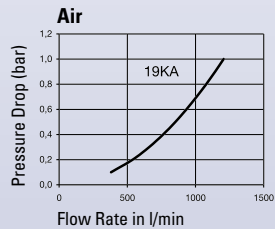
actual size

**Technical Description**

English industrial profile with UltraFlo technology. Compact dimensions. Robust coupling for compressed air applications. The steel sleeve counters oscillating forces.

**Dust Caps (P. 325)**

for coupling Part.-No. SK23S

**Chart****Advantages**

Single handed operation. Plug design optimised through greater insert depth. High flow valve.

**Interchangeability**

PCL 60 (UK)

**Working Pressure**

PB = 35 bar, maximum static working pressure with safety factor of 4 to 1.

**Working Temperature\***

-20°C up to +100°C (NBR)  
-40°C up to +120/150°C (EPDM)  
-15°C up to +200°C (FKM)  
0°C up to +316°C (FFKM)  
depending on the medium.

\*At a temperature below -20°C and above +100°C special seals are available on request.

**Material****Coupling**

Back Body  
Valve Body  
Sleeve  
Valve  
Inner Sleeve  
Spring Plate  
Spring and Locking Ring  
Locking Balls  
Seals

**Standard**

Brass, Nickel Plated  
Brass, Nickel Plated  
Steel Hardened, Nickel Plated Zinc  
Zinc Diecasting, Nickel Plated  
Brass  
Brass  
AISI 301  
AISI 420  
NBR

**Plug**

Plug

Steel Hardened, Nickel Plated

**Couplings****RECTUS Series 19KA**

	Connection A	Hex SW	L mm	D mm	L1 mm	L2 mm	Hex1 SW1	B mm	G mm	Version	Part Number	DS
<p><b>Male Thread</b></p>	R 1/4	19	63	23	12					Standard	19KA AK13 MPN	■
	R 3/8	19	62	23	12					Standard	19KA AK17 MPN	■
	R 1/2	22	68	23	17					Standard	19KA AK21 MPN	■
<p><b>Female Thread</b></p>	G 1/4	19	58	23	9					Standard	19KA IW13 MPN	■
	G 3/8	19	58	23	9					Standard	19KA IW17 MPN	■
	G 1/2	24	60	23	12					Standard	19KA IW21 MPN	■

DS = Delivery Status:

■ in stock

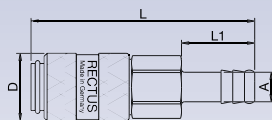
□ on short call

□ medium term delivery

## Couplings

## RECTUS Series 19KA

Connection A	Hex SW	L mm	D mm	L1 mm	L2 mm	Hex1 SW1	B mm	G mm	Version	Part Number	DS
6 mm	19	76	23	25					Standard	19KA TF06 MPN	■□
8 mm	19	76	23	25					Standard	19KA TF08 MPN	■
10 mm	19	76	23	25					Standard	19KA TF10 MPN	■□
13 mm	19	76	23	25					Standard	19KA TF13 MPN	■

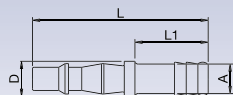


Hose Barb

## Plugs

## RECTUS Series 19KA

Connection A	Hex SW	L mm	D mm	L1 mm	L2 mm	Hex1 SW1	B mm	G mm	Version	Part Number	DS
6 mm		60	12	25					Standard	19SF TF06 SXN	■
8 mm		60	12	25					Standard	19SF TF08 SXN	■
10 mm		60	12	25					Standard	19SF TF10 SXN	■

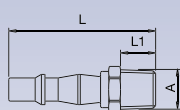


Hose Barb

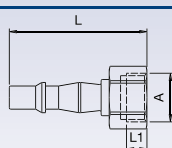
## Plugs

## RECTUS Series 19KA

Connection A	Hex SW	L mm	D mm	L1 mm	L2 mm	Hex1 SW1	B mm	G mm	Version	Part Number	DS
R 1/4	14	50		12					Standard	19SF AK13 SXN	■
R 3/8	17	50		12					Standard	19SF AK17 SXN	■
G 1/4	17	46		9					Standard	19SF IW13 SXN	■
G 3/8	19	47		9					Standard	19SF IW17 SXN	■□



Male Thread



Female Thread

DS = Delivery Status:

■ in stock

■ on short call

■□ medium term delivery