



Technical Description

1/2" Coupling-System according to US-MIL-Spec. C-4109 made of brass. Plug design optimised through greater insert depth.

Advantages

Single handed operation. Tough construction.

Working Pressure

PB = 35 bar, maximum static working pressure with safety factor of 4 to 1.

Interchangeability

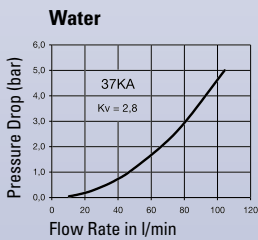
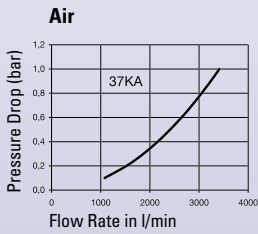
Industrial Interchange 1/2"
US-MIL-Spec. C-4109 1/2"
ISO 6150-B-17
GROMELLE 1300
HANSEN 5000

Working Temperature*

-20°C up to +100°C (NBR)
-40°C up to +120/150°C (EPDM)
-15°C up to +200°C (FKM)
depending on the medium.

*At a temperature below -20°C and above +100°C special seals are available on request.

Chart



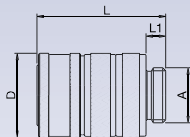
Material	Standard	Nickel Plated
Coupling		
Back Body	Brass	Brass, Nickel Plated
Valve Body	Brass	Brass, Nickel Plated
Sleeve	Brass	Brass, Nickel Plated
Valve	Brass	Brass
Spring and Locking Ring	AISI 301	AISI 301
Pins	AISI 420	AISI 420
Seals	NBR	NBR
Plug		
Plug	Steel Hardened, Nickel Plated	



Couplings

RECTUS Series 37KA

Connection A	Hex SW	L mm	D mm	L1 mm	L2 mm	Hex1 SW1	B mm	G mm	Version	Part Number	DS
1/4 NPT	30	76	35	12					Standard	37KA AN13 MPX	■
									Nickel Plated	37KA AN13 MPN	■
G 3/8									Standard	37KA AW17 MPX	■
									Nickel Plated	37KA AW17 MPN	■
1/2 NPT	30	79	35	17					Standard	37KA AN21 MPX	■
									Nickel Plated	37KA AN21 MPN	■
G 1/2									Standard	37KA AW21 MPX	■
									Nickel Plated	37KA AW21 MPN	■
3/4 NPT	30	81	35	19					Standard	37KA AN26 MPX	■
									Nickel Plated	37KA AN26 MPN	■
G 3/4									Standard	37KA AW26 MPX	■
									Nickel Plated	37KA AW26 MPN	■

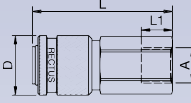
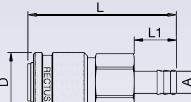


Male Thread

DS = Delivery Status: ■ in stock ■ on short call □ medium term delivery

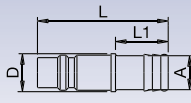
Couplings

RECTUS Series 37KA

	Connection A	Hex SW	L mm	D mm	L1 mm	L2 mm	Hex1 SW1	B mm	G mm	Version	Part Number	DS
 <p>Female Thread</p>	1/4 NPSF	30	77	35	13					Standard	37KA IN13 MPX	■
										Nickel Plated	37KA IN13 MPN	■
	3/8 NPSF	30	76	35	14					Standard	37KA IN17 MPX	■
										Nickel Plated	37KA IN17 MPN	■
	1/2 NPSF	30	83	35	23					Standard	37KA IN21 MPX	■
										Nickel Plated	37KA IN21 MPN	■
	3/4 NPSF	32	84	35	24					Standard	37KA IN26 MPX	■
										Nickel Plated	37KA IN26 MPN	■
 <p>Hose Barb</p>	10 mm	30	86	35	25					Standard	37KA TF10 MPX	■
										Nickel Plated	37KA TF10 MPN	■
	13 mm	30	86	35	25					Standard	37KA TF13 MPX	■
										Nickel Plated	37KA TF13 MPN	■
	16 mm	30	86	35	25					Standard	37KA TF16 MPX	■
										Nickel Plated	37KA TF16 MPN	■
	19 mm	30	86	35	25					Standard	37KA TF19 MPX	■
										Nickel Plated	37KA TF19 MPN	■

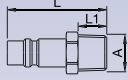
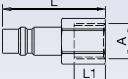
Plugs

RECTUS Series 37KA

	Connection A	Hex SW	L mm	D mm	L1 mm	L2 mm	Hex1 SW1	B mm	G mm	Version	Part Number	DS
 <p>Hose Barb</p>	10 mm		62	17	25					Standard	37SF TF10 SXN	■
	13 mm		62	17	25					Standard	37SF TF13 SXN	■
	16 mm		62	18	25					Standard	37SF TF16 SXN	■
	19 mm		72	21	35					Standard	37SF TF19 SXN	■

Plugs

RECTUS Series 37KA

	Connection A	Hex SW	L mm	D mm	L1 mm	L2 mm	Hex1 SW1	B mm	G mm	Version	Part Number	DS
 <p>Male Thread</p>	1/4 NPT	17	53		12					Standard	37SF AN13 SXN	■
	3/8 NPT	17	53		12					Standard	37SF AN17 SXN	■
	1/2 NPT	22	59		17					Standard	37SF AN21 SXN	■
	3/4 NPT	27	62		19					Standard	37SF AN26 SXN	■
 <p>Female Thread</p>	3/8 NPSF	19	56		19					Standard	37SF IN17 SXN	■
	1/2 NPSF	24	61		23					Standard	37SF IN21 SXN	■
	G 1/2									Standard	37SF IW21 SXN	■
	3/4 NPSF	32	62		24					Standard	37SF IN26 SXN	■
	G 3/4									Standard	37SF IW26 SXN	■

DS = Delivery Status:

■ in stock

□ on short call

□ medium term delivery